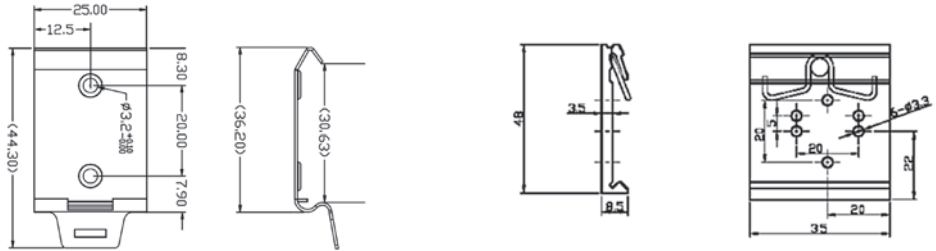


DIN rail clamp



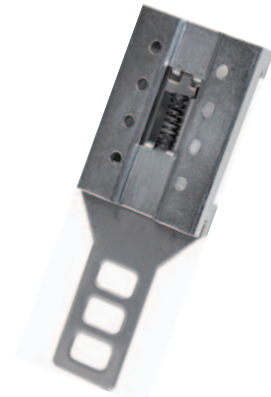
DIMENSION



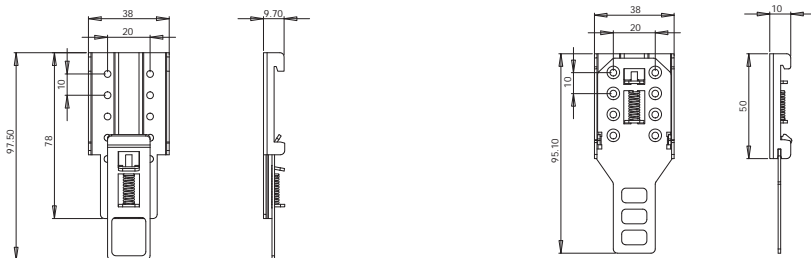
VERSIONS	Item	Cat. No.	Item	Cat. No.
	CDIN-2	XCDIN2	CDIN-4	XCDIN4

GENERAL TECHNICAL DATA

Type of material	P13-FE00	aluminium
Treatment	black passivated	—
Mounting information	screws or rivets	screws or rivets
Mounting rail type according to IEC60715/TH35-7.5	PR/3/AC, PR/3/AC/ZB, PR/3/AS, PR/3/AS/ZB	PR/3/AC, PR/3/AC/ZB, PR/3/AS, PR/3/AS/ZB
Mounting rail type according to IEC60715/G32	—	—



DIMENSION



VERSIONS	Item	Cat. No.	Item	Cat. No.
	CDIN-5	XCDIN5	CDIN-M	XCDINM45

GENERAL TECHNICAL DATA

Type of material	P13-FE00	P13-FE00
Treatment	white zinc-plated	zinc-plated
Mounting information	screws or rivets	screws
Mounting rail type according to IEC60715/TH35-7.5	PR/3/AC, PR/3/AC/ZB, PR/3/AS, PR/3/AS/ZB	PR/3/AC, PR/3/AC/ZB, PR/3/AS, PR/3/AS/ZB
Mounting rail type according to IEC60715/G32	—	—