

C3-A3x

3 pole | changeover contact

Main circuit

Available contact materials	<ul style="list-style-type: none"> ⚡ AgNi for C3-A30 ⚡ AgNi + 5 μ Au for C3-A38 ⚡ AgNi + 0.2 μ Au for C3-A39
Recommended minimum contact load	10 mA / 10 V for C3-A30, C3-A39 5 mA / 5 V for C3-A38
Maximum contact load AC	10 A / 250 V AC-1
Maximum contact load DC	10 A / 30 V DC-1
Rated current	10 A
Inrush current	30 A, 20 ms
AC load	2500 VA
DC load	fig. 3.
Mechanical endurance (cycles)	≥ 20 000 000
Electrical endurance at rated load AC-1 (cycles)	≥ 500 000

Control circuit

Nominal voltage	see table product references
Operating voltage range	0.8 U _N ... 1.1 U _N
Pick-up voltage	≤ 0.8 U _N
Release voltage	≥ 0.1 U _N
Power consumption AC / DC	2.2 VA / 1.3 W

Coil table

V AC	Ω	mA	V DC	Ω	mA
12	16	185	12	115	104
24	67	96	24	480	50
48	296	45	48	1 850	26
60	405	36	60	2 900	21
115	1 753	19	110	9 216	12
230	7 078	10	220	38 720	5.7

Insulation

Test voltage open contact	1 kV / 1 min
Test voltage contact / contact	2.5 kV / 1 min
Test voltage contact / coil	2.5 kV / 1 min
Pollution degree	3
Overtoltage category	III
Insulation resistance at 500 V	≥ 1 GΩ

General data

Ambient temperature storage (no ice)	-40 ... 80 °C
Ambient temperature operation	-40 ... 70 °C
Pick-up time / bounce time	16 ms / ≤ 3 ms
Release time / bounce time	8 ms / ≤ 1 ms
Maximum switching frequency at rated load	1200 / h
Dimension	fig. 4.
Weight	81 g
Housing material	PA / PC

Product references

Description	Type (x refers to contact material)	12	24	48	60	110	115	220	230
AC 50 Hz	C3-A3x/AC...V	✓	✓	✓	✓	✓	✓	✓	✓
LED	C3-A3xX/AC...V	✓	✓	✓	✓	✓	✓	✓	✓
RC Suppressor	C3-A3xR/AC...V	✓	✓	✓	✓	✓	✓	✓	✓
DC	C3-A3x/DC...V	✓	✓	✓	✓	✓	✓	✓	✓
LED	C3-A3xX/DC...V	✓	✓	✓	✓	✓	✓	✓	✓
LED & Free wheeling diode	C3-A3xDX/DC...V	✓	✓	✓	✓	✓	✓	✓	✓
LED & Polarity & Free wheeling diode	C3-A3xFX/DC...V	✓	✓	✓	✓	✓	✓	✓	✓
AC / DC bridge rectifier & LED	C3-A3xBX/UC...V	✓	✓	✓	✓	✓	✓	✓	✓

AC relays also available as 60 Hz. Other voltages on request. Please contact support@comatreleco.com.
«...» List coil voltage to complete product references

Accessories

Socket	S3-B, S3-S, S3-PO, S3-M, S3-M0, S3-M1
Blanking plug	S0-NP (BAG 10 PCS)

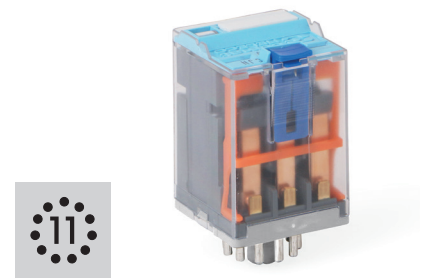


fig. 1. Wiring diagram

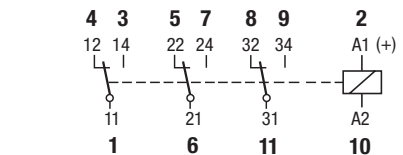


fig. 2. AC voltage endurance

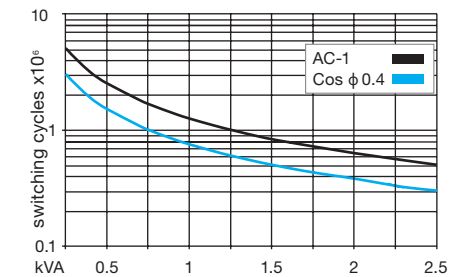


fig. 3. DC load limit curve

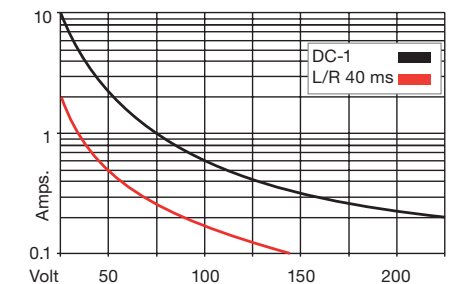
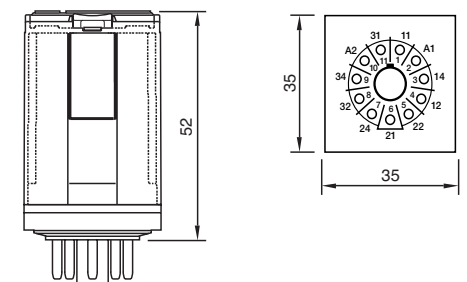


fig. 4. Dimension (mm)



Technical approvals, conformities

Standards IEC/EN 61810; IEC/EN 60947

Approvals

C3-A30 only